

Zirkonzahn[®]

Human Zirconium Technology

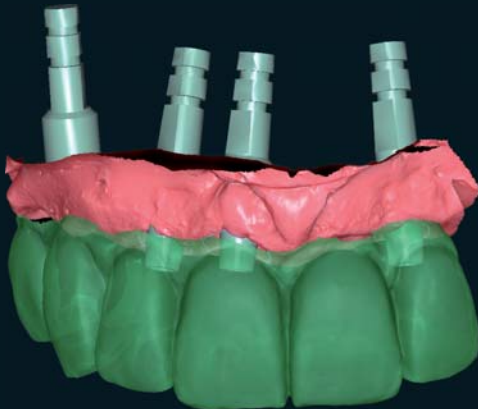


100% PRETTAU[®] ZIRCONIA - MADE BY CAD/CAM

“Zirconia needs heroes“ Enrico Steger

Occlusally screw-retained Prettau® Bridge on four implants with titanium bases

The treatment team inserted four implants in the patient's edentulous anterior region. Starting from a precision impression, a try-in prototype was fabricated in Temp Basic resin and screwed in place intraorally to examine its esthetics and function. Following minor adaptations, the restoration was sent back to the laboratory, where it was re-scanned and the definitive framework milled in Prettau® Zirconia using the milling unit M5. To facilitate ceramic veneering of the restoration, the contours were manually cut back in the anterior and posterior areas. Care must be taken to ensure that the functional aspect of the incisal edge remains fully contoured to prevent chipping. The Prettau® Bridge was coloured with Color Liquid Prettau® Aquarell and subsequently sintered. The teeth from the maxillary right canine to right lateral incisor (13 to 22) were veneered with ICE Zircon Ceramic. Stain and glaze firing can be performed in a single step using the new ICE Zircon Stains 3D and the so-called "all-in-one" technique. Prior to adhesive cementing, the titanium bases were anodized with the Titanium Spectral-Colouring Anodizer to reduce the grayscale values of the restoration.



The Prettau® Bridge

Marco D'Anniballe, Italy

Dr. David Garber, USA



Zirkonzahn®



Milled with Zirkonzahn CAD/CAM System 5-TEC

HUMAN ZIRCONIUM TECHNOLOGY

ZIRKONZAHN Worldwide - Tel +39 0474 066 680 - info@zirkonzahn.com - www.zirkonzahn.com



WEAA5452=

All information is subject to change. Errors and omissions excepted. Version: 20.01.2014